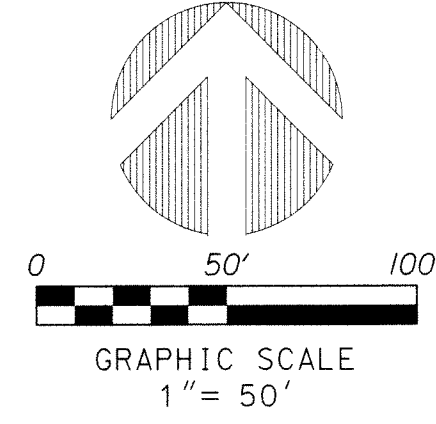


PERIMETER
 SURVEYING & MAPPING
 Certificate of Authorization No. LB7264
 Prepared by Jeff S. Hodapp, P.S.M.
 947 Clint Moore Road
 Boca Raton, Florida 33487
 Tel: (561) 241-9988
 Fax: (561) 241-5182

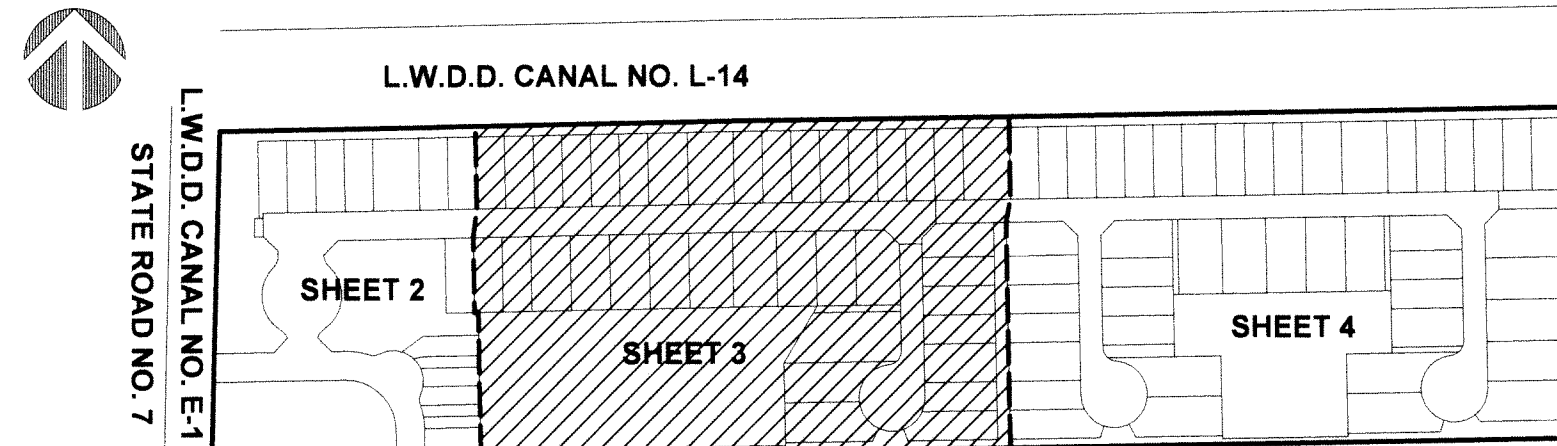


WINDSONG ESTATES

A REPLAT OF A PORTION OF TRACTS 5, 6, 7, AND 8 OF BLOCK 34, "PALM BEACH FARMS CO. PLAT NO. 3", ACCORDING TO THE PLAT THEREOF, AS RECORDED IN PLAT BOOK 2 AT PAGES 45 THROUGH 54 OF THE PUBLIC RECORDS OF PALM BEACH COUNTY, FLORIDA, IN SECTION 31, TOWNSHIP 44 SOUTH, RANGE 42 EAST, PALM BEACH COUNTY, FLORIDA.

168

SHEET 3 OF 4



KEY MAP
NOT TO SCALE

NOTES:
COORDINATES, BEARINGS AND DISTANCES

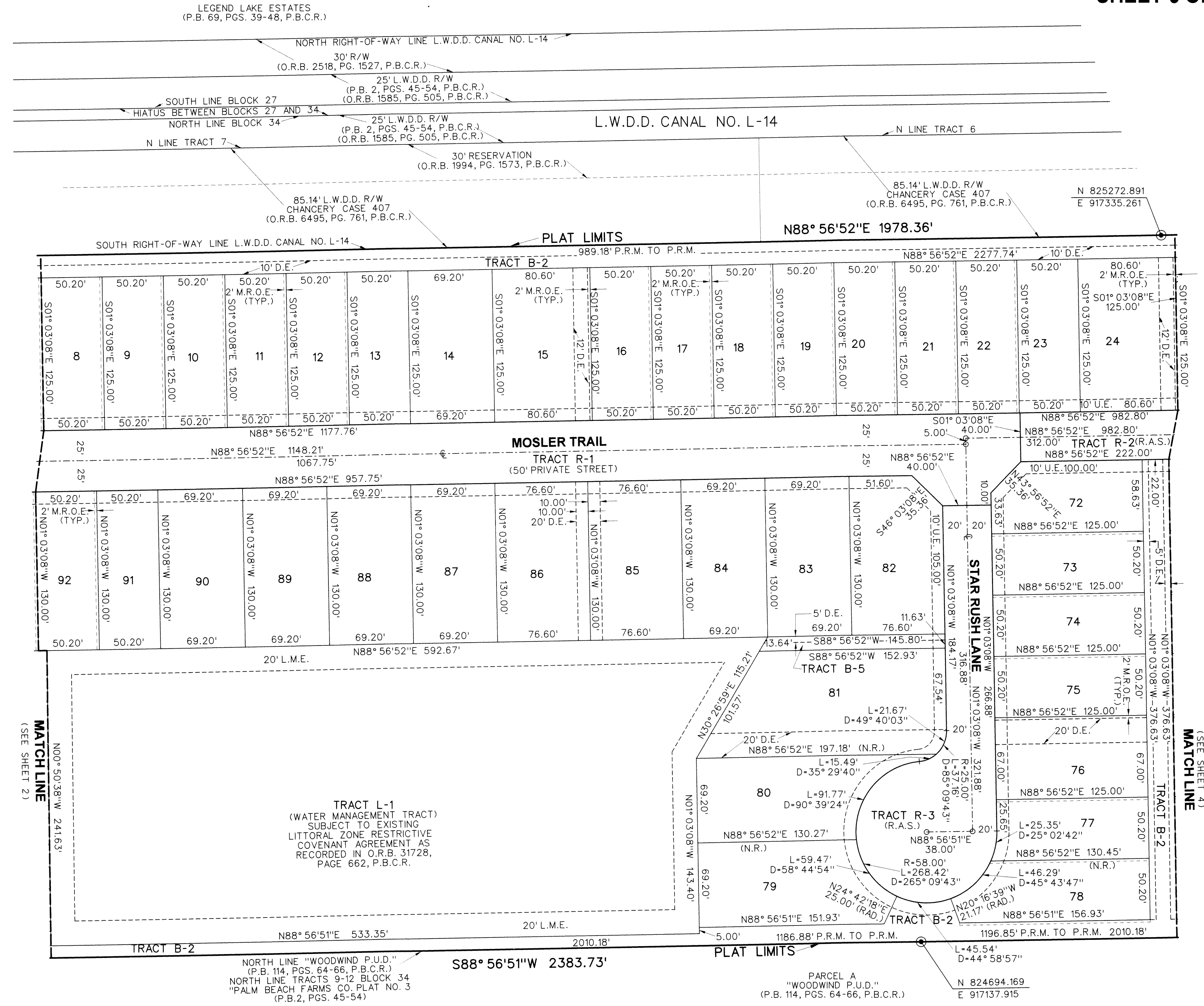
COORDINATES SHOWN ARE GRID
 DATUM - NAD 83 1990 ADJUSTMENT
 ZONE - FLORIDA EAST
 LINEAR UNIT - US SURVEY FOOT
 COORDINATE SYSTEM 1983 STATE PLANE
 TRANSVERSE MERCATOR PROJECTION
 ALL DISTANCES ARE GROUND, UNLESS OTHERWISE NOTED
 SCALE FACTOR = 1.00020
 GROUND DISTANCE X SCALE FACTOR = GRID DISTANCE
 BEARINGS AS SHOWN HEREON ARE GRID DATUM,
 NAD 83 1990 ADJUSTMENT, FLORIDA EAST ZONE

LEGEND:

- SET P.R.M. (UNLESS OTHERWISE NOTED) - 4" x 4" CONC. MON. WITH ALUMINUM DISK STAMPED LB7264
- CENTERLINE
- PERMANENT CONTROL POINT L.B.7264

ABBREVIATIONS:

- CONC. CONCRETE
- COR. CORNER
- D.E. DELTA (CENTRAL ANGLE)
- DRAINAGE EASEMENT
- P.D.E. PUBLIC DRAINAGE EASEMENT
- F.P.L. FLORIDA POWER AND LIGHT COMPANY
- L.B. LICENSED BUSINESS
- L.B.E. LANDSCAPE BUFFER EASEMENT
- L.M.E. LAKE MAINTENANCE EASEMENT
- L.M.A.E. LAKE MAINTENANCE ACCESS EASEMENT
- L.S. LICENSED SURVEYOR
- L.S.E. LIFT STATION EASEMENT
- L.W.D.D. LAKE WORTH DRAINAGE DISTRICT
- MON. MONUMENT
- O.R.B. OFFICIAL RECORDS BOOK
- P.B. PLAT BOOK
- R. RADIAL
- L (N.R.) ARLENGTH NON-RADIAL
- (RAD.) RADIAL
- P.B.C.R. PALM BEACH COUNTY RECORDS
- P.B.C.U.E. PALM BEACH COUNTY UTILITY EASEMENT
- PG. PAGE
- PAGES
- P.O.B. POINT OF BEGINNING
- P.O.C. POINT OF COMMENCEMENT
- P.R.M. PERMANENT REFERENCE MONUMENT
- P.S.M. PROFESSIONAL SURVEYOR & MAPPER
- P.U.D. PLANNED UNIT DEVELOPMENT
- R.A.S. RESIDENTIAL ACCESS STREET
- R.L.S. REGISTERED LAND SURVEYOR
- R/W RIGHT-OF-WAY
- SEC. SECTION
- U.E. UTILITY EASEMENT
- PC POINT OF CURVATURE
- PT POINT OF TANGENCY
- PCC POINT OF COMPOUND CURVATURE
- NT NON-TANGENT
- M.R.O.E. MAINTENANCE & ROOF OVERHANG EASEMENT



MATCH LINE
(SEE SHEET 2)

MATCH LINE
(SEE SHEET 4)

TRACT L-1
 (WATER MANAGEMENT TRACT)
 SUBJECT TO EXISTING
 LITTORAL ZONE RESTRICTIVE
 COVENANT AGREEMENT AS
 RECORDED IN O.R.B. 3172B,
 PAGE 662, P.B.C.R.

PARCEL A
 "WOODWIND P.U.D."
 (P.B. 114, PGS. 64-66, P.B.C.R.)
 N 824694.169
 E 917137.915